

# ECORASTER® E40

WORLD'S MOST DURABLE PERMEABLE PAVING SURFACE



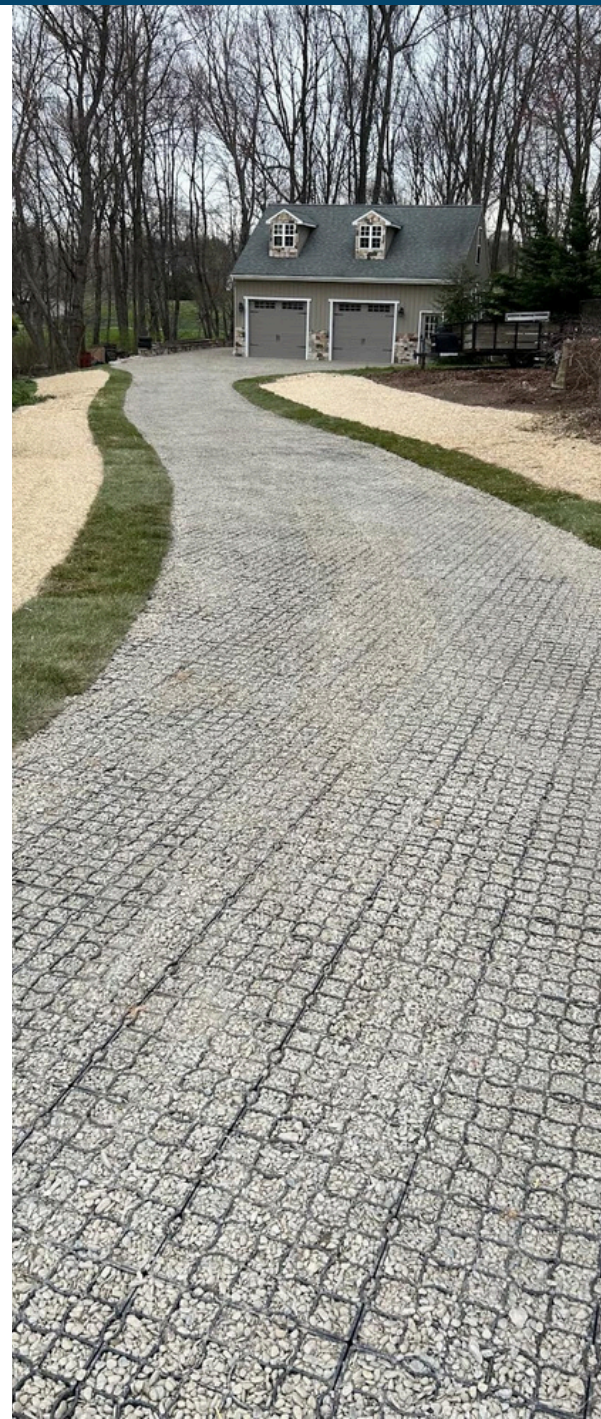
**LDPE 100% RECYCLED**

## APPLICATIONS:

- Fire Lanes
- Utility and Emergency Access Roads
- Parking Lots
- Overflow parking areas
- Road Shoulders
- Paths and Walkways (ADA Compliant)
- Trails and trail-hardening
- Golf Cart path shoulders and aprons

## FEATURES & FACTS

- 100% Post-Consumer Recycled LDPE
- 20 Year Warranty
- Used for gravel and grass applications
- Up to 160,000 PSF
- FEMA Approved
- Army Corps of Engineers Approved
- Exceeds H20 and HL93-Vehicular Live Loading
- DOT Approved in Multiple States



# ECORASTER E40

## WORLD'S MOST DURABLE PERMEABLE PAVING SURFACE

### LOW MAINTENANCE

Once installed, the E40 permeable ground reinforcements require little to no maintenance. No edging required! The individual infill compartments minimize rutting and bird baths - a typical challenge with unpaved surfaces.

### UNMATCHED RESISTANCE

Built to withstand whatever conditions you throw at them, these interlocking Polyethylene pads resist front, UV damage, deicing salt, gasoline and more

- LDPE helps product withstand fluctuating temperatures
- Ideal in temperatures from -35C to +90C (-30 to +194F)
- Snow Plowable
- Low temperature impact performance
- Eliminates the need to sand or salt
- Remains flexible and does not become brittle in all conditions to prevent breaking

### DURABLE AND DRIVEABLE

Fully drivable both models demonstrate an actual resilience of up to 800 t/m<sup>2</sup>,

### RAPID INSTALLATION

E40 pieces come preassembled in approx. 14-square-foot panels for rapid deployment. A single person can install up to 1,076 square feet of pads in one hour without the use of heavy construction equipment

### THREE STEP PROCESS

1. Lay
2. Cut
3. Fill

TYPE	DIMENSIONS	MATERIAL	WALL THICKNESS	LOAD	COMPRESSIVE STRENGTH	WEIGHT PER PIECE	SOLUBILITY
E40	13 x 13 x 1.6	100% recycled Polyethylene (LDPE)	0.14	Up to 160,000 PSF (depending on fill type)	Up to 20t point axle load (DIN 1072)	1.72	Resistant to acids, alkalis, alcohol, oil and petrol





This Design Guidance can be used as a starting point for projects using Ecoraster® products. Conditions vary greatly from project to project based on a wide variety of conditions that need to be considered. These are the suggested minimum base requirements for a structurally sound project. Projects with difficult soils like CL down to PT should consult a qualified engineer for further guidance. These base depths are for structural strength only and are not intended to meet any particular storm water detention requirement.

## Design Guidance for Base Requirements Used Under Ecoraster Products

ECORASTER E40			
Vehicle Type:	CBR 2-4	CBR 4-6	CBR >6
Heavy Truck <90,000 lbs	8	6	4
Medium Truck <60,000lbs	6	4	4
Light Truck <40,000lbs	4	2	2
Car, Pickup <8,000lbs	2	2	0
Cart Path, Trail <1,000lbs	2	0	0

Normal Traffic:



Occasional Use:



- All depths are in inches
- CBR = California Bearing Ratio
- For CBR < 2 contact Purus NA Ecoraster, Inc. for recommendations
- These depths are suggestions only and all designs should be approved by a qualified engineer
- All depths are for uniformly graded angular gravel per AASHTO guidelines



**Contact Us**

lucy@advancedsiteproducts.com  
 customerservice@advancedsiteproduct.com